



WASTE MANAGEMENT

**GOVERNMENT COLLEGE JAITHARI,
DISTRICT- ANUPPUR (M.P.) INDIA**

POLICY

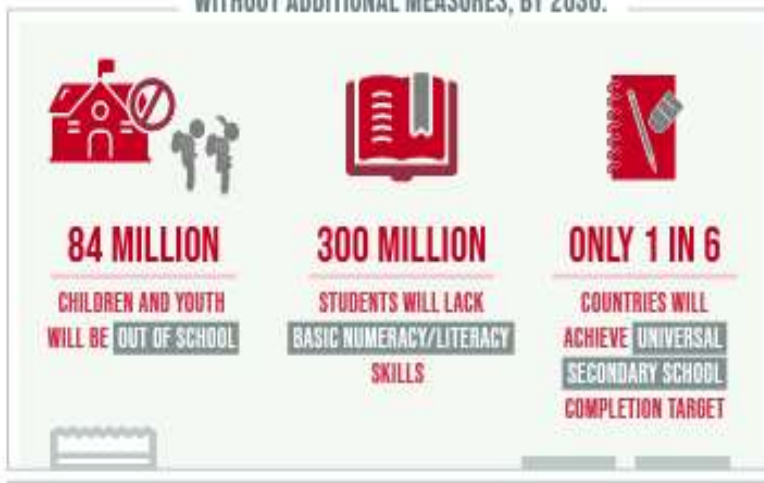


ENSURE INCLUSIVE AND EQUITABLE QUALITY EDUCATION AND PROMOTE LIFELONG LEARNING OPPORTUNITIES FOR ALL

DESPITE SLOW PROGRESS,

THE WORLD IS FALLING FAR BEHIND IN ACHIEVING QUALITY EDUCATION

WITHOUT ADDITIONAL MEASURES, BY 2030:

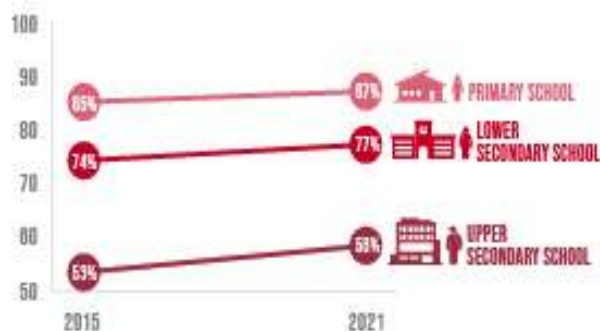


THE PANDEMIC

CAUSED LEARNING LOSSES IN **4 IN 5** OF 104 COUNTRIES STUDIED

PRIMARY AND SECONDARY SCHOOL COMPLETION RATES ARE **RIISING**, BUT THE PACE IS SLOW AND UNEVEN

COMPLETION RATES



LOW- AND LOWER-MIDDLE-INCOME COUNTRIES FACE A NEARLY

\$100 BILLION

ANNUAL FINANCING GAP

TO REACH THEIR EDUCATION TARGETS



Mr. Ashok Kumar Rathour

Adhyaksh

Janbhagidari Samiti Govt. College Jaithari, Anuppur (M.P.)

Forward



Dear Esteemed Members of Government College Jaithari,

As the Adhyaksh of the Janbhagidari Samiti of Government College Jaithari, District Anuppur, Madhya Pradesh, it gives me immense pleasure to present this foreword to our comprehensive College Policy. Since our institution's establishment in 2012, we have been on a journey of growth, learning, and community engagement. This policy document marks another significant milestone in our college's development.

The Janbhagidari Samiti, or Public Participation Committee, plays a crucial role in bridging the gap between the college and the community. Our committee's vision aligns perfectly with the college's mission to provide quality education while fostering a sense of social responsibility among our students.

This College Policy is a testament to our collective efforts to create an institution that not only excels in academics but also prepares students to be responsible citizens. It encompasses various aspects of college life, from academic standards to community outreach programs, reflecting our commitment to holistic education.

I urge all stakeholders - students, faculty, staff, and community members - to embrace this policy wholeheartedly. It is through your active participation and adherence to these guidelines that we can truly realize the potential of our institution.

As we move forward, let us remember that the strength of our college lies in the spirit of 'Janbhagidari' - public participation. This policy is not just a document, but a shared vision for our college's future. Together, we can build an educational institution that serves as a beacon of knowledge and social progress in our region.

I look forward to your continued support and cooperation in implementing this policy and in furthering the growth of Government College Jaithari.

Sincerely,

Mr. Ashok Kumar Rathour
Adhyaksh- Janbhagidari Samiti
Govt. College Jaithari
District Anuppur, (M.P.)



Dr. Ramesh Singh Wate

Principal

Govt. College Jaithari, Anuppur (M.P.)

Forward



Dear Students, Faculty, and Staff,

As the Principal of Government College Jaithari, District Anuppur, Madhya Pradesh, it is my privilege to present our comprehensive College Policy. This document serves as a cornerstone for our institution, outlining our vision, mission, and the guiding principles that shape our academic environment.

Our college policy is designed to foster an atmosphere of academic excellence, personal growth, and social responsibility. It reflects our commitment to providing quality education while nurturing the diverse talents of our students. The policy encompasses various aspects of college life, including academic standards, code of conduct, extracurricular activities, and community engagement.

I encourage all members of our college community to familiarize themselves with this policy. It is not merely a set of rules, but a roadmap for our collective success. By adhering to these guidelines, we create a harmonious and productive learning environment that benefits everyone.

As we move forward, let us embrace these policies with enthusiasm and dedication. Together, we can build a college that not only imparts knowledge but also shapes responsible citizens who will contribute positively to society.

I look forward to working with all of you in upholding the high standards set forth in this policy and in continually striving for excellence in all our endeavors.

Sincerely,

Dr. Ramesh Singh Wate
Principal
Govt. College Jaithari
District-Anuppur (M.P.)

Govt. College Jaithari, Anuppur M.P.

Department of Higher Education M.P.

Waste Management Policy

1. Objective:

The objective of this policy is to ensure effective and sustainable management of waste in accordance with the guidelines of the Government of India. The policy aims to reduce, reuse, recycle, and manage waste to promote a clean and healthy environment.

2. Waste Segregation:

All waste generated within the college premises should be segregated at the source into two categories:

Gila Kachra (Wet Waste): This includes food waste, tea bags, garden and leaf litter, etc. Wet waste should be disposed of in the Green Box.

Sukha Kachra (Dry Waste): This includes paper, wood, plastic, metal, glass, etc. Dry waste should be disposed of in the Blue Box.

3. Waste Reduction:

The college will implement strategies to reduce waste generation. This includes promoting digital notes, encouraging the use of reusable items, and minimizing the use of disposable items.

4. Recycling and Composting:

The college will implement a recycling program for dry waste and a composting program for wet waste. The compost generated can be used for gardening purposes within the college premises.

5. Training and Awareness:

The college will conduct regular training and awareness programs for students, faculty, and staff to ensure everyone understands and follows the waste management policy.

6. Monitoring and Review:

The college will regularly monitor the effectiveness of the waste management policy and make necessary adjustments based on the findings.

7. Compliance:

All members of the college community are expected to comply with this policy. Non-compliance may result in appropriate action.

This policy is subject to changes in accordance with updates to the waste management guidelines of the Government of India.

Prepared By: - Dr. Khushboo Khan

Verified By: - Dr. Jeetendra Singh Dhurve

Coordinator IQAC
Govt. College Jaithari

Principal
Govt. College Jaithari
Anuppur (M.P.) 484330